

TOWER CRANE LAYOUT PLAN

漆咸花園6545地盤

DRAWN BY:

Paul H.H. Hung

DRAWING NO.:

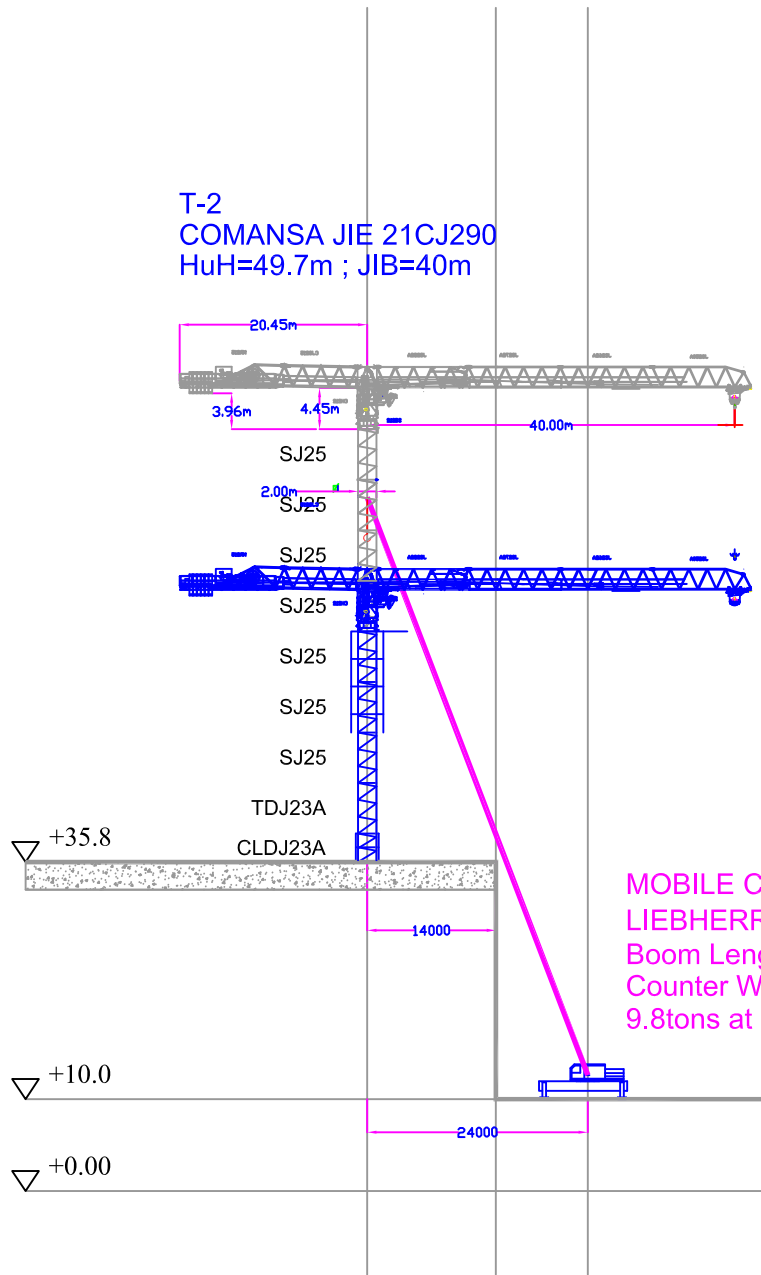
CH - 1 - r0

TITLE:

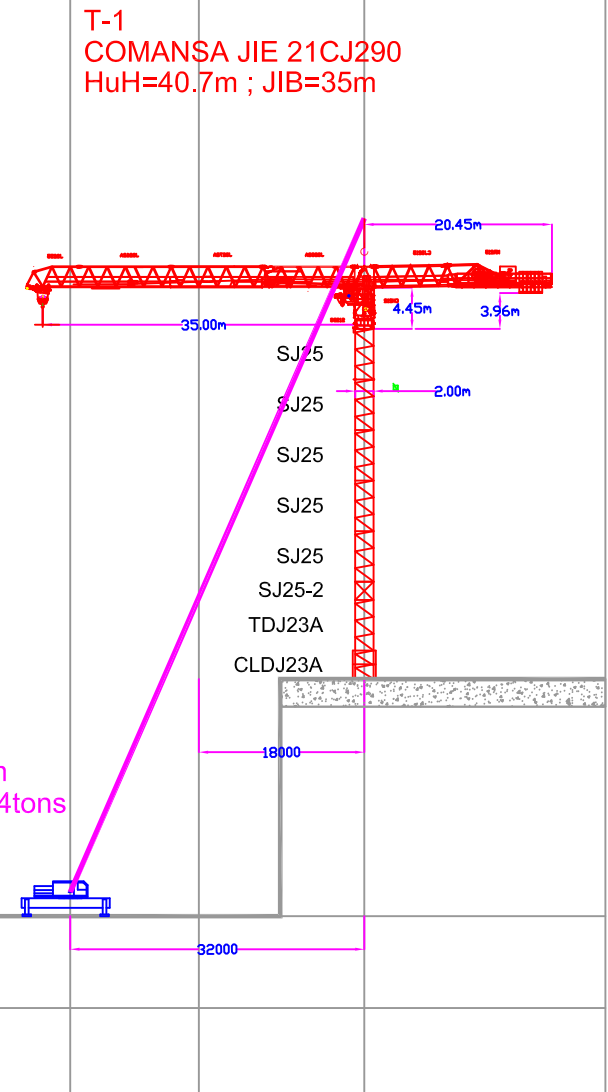
Plan

DATE:

30 August 2010



MOBILE CRANE
LIEBHERR LTM1200-5.1
Boom Length = 67.3m
Counter Weight = 32tons
9.8tons at 24m radius



MOBILE CRANE
DEMAG AC250-1
Boom Length = 80.0m
Counter Weight = 52.4tons
8.5tons at 32m radius